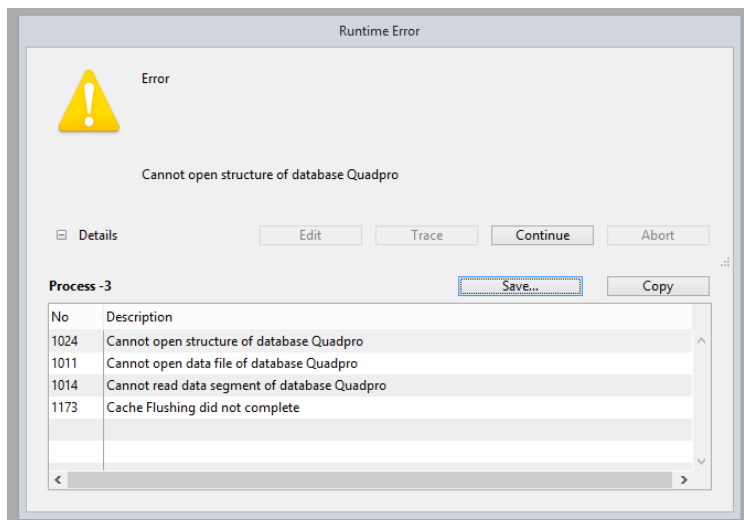
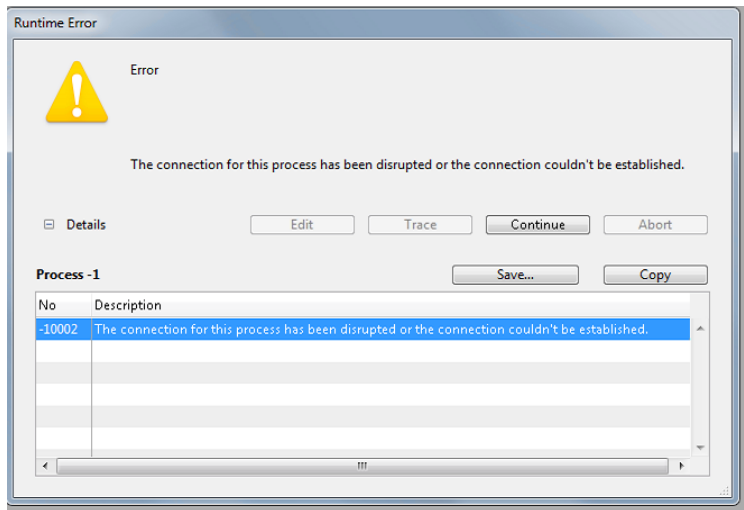


Quadpro Not Opening

Should your staff receive the following errors when opening Quadpro, you will need to first try the steps listed below.



Step 1: Please attempt to re open Quadpro, sometimes this works to resolve the problem.

Step 2: If reopening Quadpro does not work, please go to **SERVICES** and **restart** the **4D SERVER**. Please wait for the 4d server to restart and show as running before attempting to open Quadpro.

Step 3: Should this not work either, please go to **Task Manager** and end the 4d server process entirely. Then go to **Program Files > Quadpro > 4d server** and **right click on 4d.exe** and **run as administrator**. Open the **Quadpro** program to check if it now opens. If Quadpro opens smoothly, **close Quadpro then the 4D server down** and then start the 4d server service again once you have done that.

NOTE: Sometimes Quadpro will not open due to lack of space on the holding drive, please ensure there is **enough** space so that Quadpro can run.