

Quadpro Help Desk

Creating a Building Hotspot

Creating a Building Hot Spot:

You can give your buildings clickable hotspots to bring up the Building Inspector and information specific to that building.

From the Home Screen, click on the small 'Find' icon to the bottom left of the Site Map.

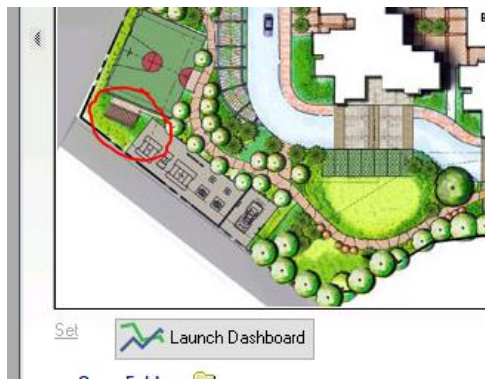


This will then change to 'Set' once clicked on

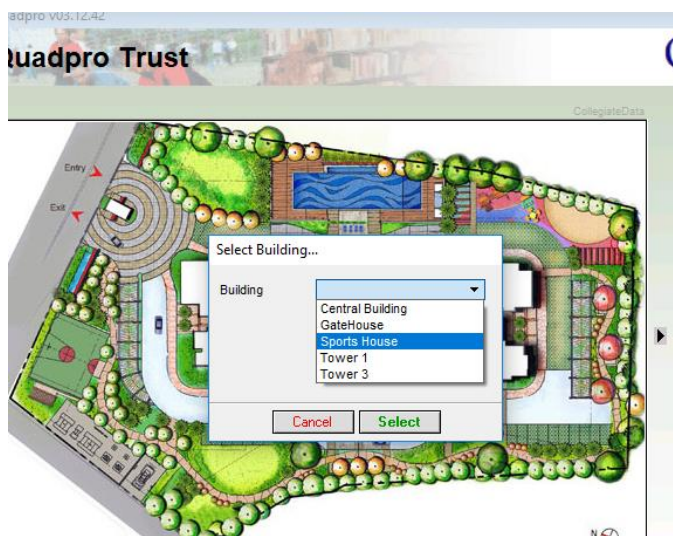


Once you have this appear you can now click and enter a hotspot on any building.

Simply click on the building you want to create a hotspot for. In this example we will use the sports house which is on the left hand side of the site.



Once you click on the building a drop down menu will appear much like the one below.



Simply choose the building you want to make clickable and the click 'Select' to confirm your option.

To then view the Building Inspector , click back on 'Set' which will now revert back to 'Find'

Click on the Building to now display it's Building Inspector